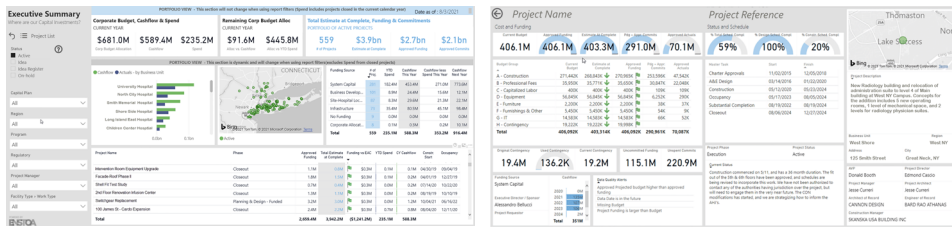


Starfish Projects

Unlock insights in capital project portfolios

Milestones, costs, budgets, risks, issues, invoices, changes, contracts, large capital projects have so many moving parts, it can be hard to keep up. If project data is not timely, reliable, and relevant, your portfolio loses cohesion, your team loses momentum, and your organization loses money. Enstoa's Starfish Projects analytics platform with its AI agent pulls data from your project management, finance, lease management, and facilities systems to provide you with a comprehensive analytics tool that pinpoints top metrics around status, risk, and performance. Improve your construction and engineering operations with our AI solutions that effectively integrate human expertise and advanced technology to boost efficiency and growth.



what are the total current commitments, total actuals and remaining balance for the active projects of the vendor - "catalyst construction services llc-549539"

Total Current Commitments, Total Actuals, and Remaining Balance for Active Projects for the Vendor 'CATALYST CONSTRUCTION SERVICES LLC-549539'

- The vendor 'CATALYST CONSTRUCTION SERVICES LLC-549539' shows a total current commitment of approximately 1.568 million. The total actual amount of approximately 1.563 million closely matches the commitment, leaving a balance of around \$4852.85.

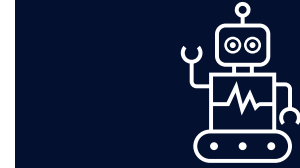
i want to know who is project manager, and architect, facilities director for the project - sterilization and high-level disinfection compliance

Project Manager, Architect, and Facilities Director for the Project - Sterilization and High-level Disinfection Compliance

- For the specified project, the Project Manager is 'Esdaile, Alex'.
- The Project Architect working for the project is 'SHEPLEY BULFINCH RICHARDSON & ABBOTT INC-9272'.
- 'Todd Hedges' serves as the Facilities Director for this project.

please group active projects by project phase and order them as well. (pie-chart)

Active Projects by Project Phase



Powered by
Enstoa AI Agents

Elevate your team's performance through AI-integrated capabilities



Simplify project administration

Aggregate information from multiple systems to save time.



Increase staff efficiency

Reduce manual reporting and identify actionable insights quicker.



Support investment decisions

Compare project portfolio scenarios with multi-year projections.



Align budgets and cash with finance

Align project portfolio and infrastructure investments with the organizational strategy.